

CERTIFIED LAND CORNER RECORDATION

1988 MAY 1 27

DESCRIPTION OF CORNER EVIDENCE FOUND, AND ORIGINAL RECORD (if known)  
Found no evidence of previous monumentation

1/4 S. 10  
S. 15  
T. 13N., R. 64W.  
6th P.M.

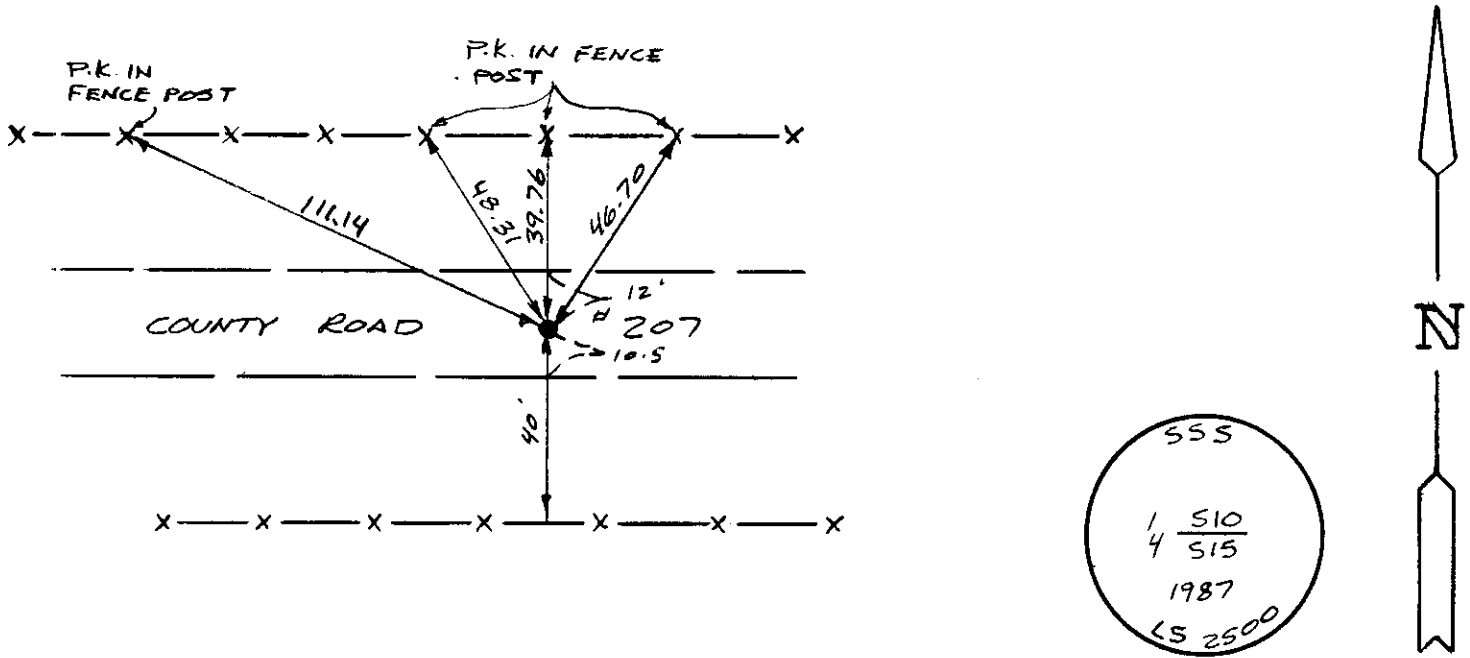
G.L.O. - Record - Sandstone 16" x 8" x 6", Edwing James & Alfred M. Rogers,  
Deputy Surveyors, June 6, 1871

DESCRIPTION OF MONUMENT AND ACCESSORIES ESTABLISHED  
TO PERPETUATE THE ORIGINAL LOCATION OF THIS CORNER:

At the corner: Set 5/8" x 18" rebar with 2" aluminum cap projectin 0.6 feet below road  
surface, set per County Road plans and stamped as shown below.

Accessories : See ties below.

SKETCH, WITH COURSE AND DISTANCE TO ADJACENT CORNER IF DETERMINED IN THIS SURVEY.  
(May Sketch or Paste Reproduction on Reverse Side.)



I, John A. Steil certify that I have carefully performed or reviewed the work done on the diagrammed corner as reported on this recordation form and approve the same.

*John A. Steil*  
Signature of Surveyor

L.S. 2500  
Registration No.

STATE OF WYOMING,  
Office of Clerk and Recorder,  
County of Laramie

This "corner record" was filed for record on the 5th day of May, 1988, was noted on the cross-index plat and is assigned page No. 1970, in book No. 1259.

*Janet C. Whitehead*  
County Official

|                 |             |               |               |                 |
|-----------------|-------------|---------------|---------------|-----------------|
| Cross Index No. | <u>J-15</u> | T. <u>13N</u> | R. <u>64W</u> | Mer. <u>6th</u> |
|                 |             | T. <u>13N</u> | R. <u>64W</u> | Mer. <u>6th</u> |
|                 |             | T. <u>13N</u> | R. <u>64W</u> | Mer. <u>6th</u> |
|                 |             | T. <u>13N</u> | R. <u>64W</u> | Mer. <u>6th</u> |
|                 |             | T. <u>13N</u> | R. <u>64W</u> | Mer. <u>6th</u> |
|                 |             | T. <u>13N</u> | R. <u>64W</u> | Mer. <u>6th</u> |
|                 |             | T. <u>13N</u> | R. <u>64W</u> | Mer. <u>6th</u> |